

Relationship between BRAF V600E and KRAS mutations in stool for identifying colorectal cancer: A cross-sectional study

by Warsinggih .

FILE	1-S2.0-S2049080120303812-MAIN.PDF (983.66K)	WORD COUNT	5166
TIME SUBMITTED	12-NOV-2020 06:36PM (UTC+0700)	CHARACTER COUNT	27007
SUBMISSION ID	1443804817		



Contents lists available at ScienceDirect

Annals of Medicine and Surgery

journal homepage: www.elsevier.com/locate/amsu



Cross-sectional Study

35
Relationship between *BRAF V600E* and *KRAS* mutations in stool for identifying colorectal cancer: A cross-sectional study



Warsinggih^{a,*}, Liliyanto^a, Marhamah^b, M. Ihwan Kusuma^a, Julianus Aboyaman Uwuratuw^a, Erwin Syarifuddin^a, Muhammad Faruk^c

^a Division of Digestive, Department of Surgery, Faculty of Medicine, Hasanuddin University, Makassar, Indonesia

^b Department of Pediatric Dentistry, Faculty of Dentistry, Hasanuddin University, Makassar, Indonesia

^c Department of Surgery, Faculty of Medicine, Hasanuddin University, Makassar, Indonesia

ARTICLE INFO

Keywords:
BRAF V600E
KRAS
Stool
Colorectal cancer

ABSTRACT

Background: With early diagnosis, colorectal cancer (CRC) is a curable disease. As studies in the past 15 years have shown, specific genetic changes occur in the neoplastic transformation of normal colonic epithelium to benign adenoma until becoming adenocarcinoma. Considering that dynamic, we aimed to determine how v-raf murine sarcoma viral oncogene homolog B1 (*BRAF*) V600E and Kirsten rat sarcoma (*KRAS*) mutations relate to the location, histopathology, and degree of tumor differentiation in CRC.

Methods: With a cross-sectional design involving an observational analytical approach, we determined the relationship of *BRAF* V600E and *KRAS* mutations to the location, histopathology, and degree of tumor differentiation in CRC.

Result: The sample contained 43 patients with CRC aged 21–80 years, with an average of 56.0 ± 11.2 years, 46.5% of whom were male and 53.5% female, for a male-to-female ratio of 1.0–1.15. Most tumors were located in the right colon ($n = 18$, 41.9%), followed by the rectum ($n = 14$, 32.6%) and left colon ($n = 18$, 25.6%). Non-mucinous adenocarcinoma was more prevalent than mucinous adenocarcinoma, with 22 (51.2%) and 21 (48.8%) patients, respectively. Nineteen tumors were poorly differentiated (44.2%), 15 were moderately differentiated (34.9%), and nine were well-differentiated (20.9%). *BRAF* V600E mutations totaled six (14%), whereas non-*BRAF* V600E mutations totaled 37 (86.0%). *BRAF* V600E mutations significantly related to tumor location, degree of differentiation, and histopathology ($p < .01$).

Conclusion: A significant relationship exists between *BRAF* V600E mutations in the stool of patients with CRC and location, histopathology, and degree of tumor differentiation.

1. Introduction

With early diagnosis, colorectal cancer (CRC) is a curable disease. As studies in the past 15 years have shown, specific genetic changes occur in the neoplastic transformation of normal colonic epithelium to benign adenoma until becoming adenocarcinoma [1]. Although CRC is the third-leading cause of cancer-related death worldwide [2,3], its mortality has been reduced due to early detection with population-based screening programs [4].

In Indonesia, the absence of population-based data has meant that no clear overview of the incidence of CRC there remains unavailable. In

fact, various reports only show increases in the number of cases of CRC as one of the 10 most common cancers. Even so, data from the Indonesian Ministry of Health indicate an incidence of CRC totaling 1.8 people for every 100,000 in the population. In 2005, CRC ranked fourth highest among malignant cancers; however, by 2006, cases of CRC totaled 107, and the disease ranked third-most malignant, and by 2008, cases totaled 272, and malignancy had risen to second, following only breast cancer [5].

The prognosis of patients with CRC is heavily influenced by several factors, including clinical variables, stage, histopathology, and molecular Oncogenetic factors of the tumor. According to the literature, the

* Corresponding author. Division of Digestive, Department of Surgery, Faculty of Medicine, Hasanuddin University Makassar, Jalan Perintis Kemerdekaan KM 11, Makassar, South Sulawesi, 90245, Indonesia.

E-mail addresses: kbd.warsinggih@gmail.com (Warsinggih), dr.liliyanto.lie@gmail.com (Liliyanto), marhamahsinggih@gmail.com (Marhamah), ihwankusuma@gmail.com (M.I. Kusuma), boyuwuratuw@gmail.com (J.A. Uwuratuw), erwinsyarifuddin@yahoo.com (E. Syarifuddin), farox8283@gmail.com (M. Faruk).

22
<https://doi.org/10.1016/j.amsu.2020.10.027>

Received 19 August 2020; Received in revised form 11 October 2020; Accepted 11 October 2020

2 available online 23 October 2020

2049-0801/© 2020 The Author(s). Published by Elsevier Ltd on behalf of IJS Publishing Group Ltd. This is an open access article under the CC BY license

<http://creativecommons.org/licenses/by/4.0/>.

discovery of *v-rat murine sarcoma viral oncogene homolog B1 (BRAF) V600E* mutations indicates the possibility of colon cancer with aggressive phenotypes, and such mutations have become a significant prognostic biomarker, especially in end-stage cases [6]. At the same time, *Kirsten rat sarcoma (KRAS)* mutations, typically analyzed in stool samples, are also prognostic factors in patients with CRC [7,8].

Given those findings and trends, in our study we sought to ascertain the relationship of *BRAF V600E* and *KRAS* mutations with the degree of differentiation in CRC.

2. Methods

To determine the relationship of *BRAF V600E* and *KRAS* mutations with the degree of differentiation in CRC, in our study we adopted a cross-sectional design guided by an observational analytical approach. Our research was conducted in a referral hospital in eastern Indonesia following the approval of the local ethics committee (no. 62/UN4.6.4.5.31/PP36/2019) and has been registered with the Research Registry (no. 5926). Herein, our work is reported in accordance with Strengthening the Reporting of Cohort Studies in Surgery (STROCSS) criteria [9].

2.1. Population and sample

Our study's population encompassed all patients diagnosed with CRC and treated at the referral hospital. We applied consecutive sampling to form the research sample in light of several inclusion criteria—patients had to have CRC before surgery, not exhibit total mechanical intestinal obstruction or perforation, and be willing to participate—and exclusion criteria, namely history of surgery, chemotherapy, or radiotherapy and incomplete clinical and histopathological data. We divided the patients into five age groups: less than 40 years old, 40–49 years old, 50–59 years old, 60–69 years old, and 70 years old or older.

2.2. Stool collection, processing, and storage

Fresh stool samples collected from the patients with CRC were immediately stored at temperatures of -20°C and within 24 h transferred to environment of -80°C for permanent storage.

2.3. DNA extraction

DNA extraction involved using Norgen Biotek Corp.'s 27600 Stool DNA Isolation kit according to the manufacturer's protocol. The concentration of DNA in the sample was determined by the Nano Drop 2000 (100–200 mg), and the DNA was stored at -80°C .

2.4. Polymerase chain reaction

Polymerase chain reaction (PCR) amplification and DNA sequencing were used to identify mutations in the most frequently mutated *BRAF* area: exon 11, codon 468; exon 15, codon 599; and exon 15, codon 600. Real-time PCR mutation assay did not reveal *KRAS* mutations in codons 12, 13, or 61. The Cat KT205 mini kit (Tiangen Biotech Co., Ltd., Beijing, China) for DNA in stool was used to analyze *BRAF* and *KRAS* mutations following the manufacturer's instructions. Next, sequences were analyzed using Applied Biosystems 3700 A sequences (Thermo Fisher Scientific Inc. Massachusetts, USA) and mutations in the *BRAF* codon 600 were identified in the direct sequencing of exon 15 in the *BRAF* 189-bp fragment in the exon *BRAF* 15 obtained using PCR. Nucleotide 1779 (i.e., thymidine) was converted to adenine with the BioEdit sequence alignment editor for the *BRAF V600E* mutation.

2.5. Data analysis

The obtained data were processed using Statistical package for the social sciences (SPSS) version 25 (IBM Corp. Released 2017. IBM SPSS Statistics for Windows, Version 25.0. Armonk, NY: IBM Corp.). The chi-square test was used to determine the relationship of genetic mutations in the sample.

3. Results

According to the presence of mutations in their stool samples, all 43 participants had CRC. Among the sample's other characteristics (Table 1), most patients were female ($n = 23$, 53.5%), while the most populous age group was 50–59 years (41.9%).

Regarding the distribution of CRC characteristics in the sample according to category of CRC differentiation, 44.2% of patients ($n = 19$) showed poor differentiation. Furthermore, by location, most CRC was in the right colon ($n = 18$, 41.9%). In all, 22 distributions (51.2%) related to histopathology.

Most patients showed no change in color in the fluid around the location of the cancer. Stool sample examination conducted to determine the presence of genetic mutations in the occurrence of CRC revealed a mutation in *BRAF V600E*. Mutations in the *BRAF* codon 600 were identified with the direct sequencing of exon 15 in the *BRAF* 189-bp fragment (Fig. 1) in the exon *BRAF* 15 obtained using PCR. Nucleotide 1779 (thymidine) was converted to adenine, as shown in BioEdit for the *BRAF V600E* mutation. In all, six patients (14%) exhibited mutations.

By contrast, *KRAS* did not show any mutations in the sample. Among women, the percentage of *BRAF V600E* mutations was higher (83.3%), despite being higher among men without any mutations (51.4%). Even so, statistical tests revealed that the difference was not significant ($p > .05$). Meanwhile, the percentage of *BRAF V600E* mutations was highest for patients 60–69 years old (66.7%), and no mutations were found among ones less than 50 years old. Again, however, statistical tests revealed that the difference was not significant ($p > .05$), as shown in Table 2.

Also shown in Table 2, a significant association arose between *BRAF V600E* mutations and tumor location ($p < .01$), and all *BRAF* mutations occurred in the right colon. We also detected a significant association between *BRAF V600E* mutations and degree of tumor differentiation ($p < .05$). Although all *BRAF* mutations were poorly differentiated, a significant association also emerged between *BRAF V600E* mutations and tumor histopathology ($p < .01$). On top of that, *BRAF* mutations surfaced in all mucinous adenocarcinoma. Our study additionally revealed

Table 1
Patient characteristics.

Variable		N	%
Sex	Male	20	46.5
	Female	23	53.5
Age (years)	<40	4	9.3
	40–49	6	14.0
	50–59	18	41.9
	60–69	10	23.3
	≥ 70	5	11.6
Differentiation	Poor	9	20.9
	Moderate	15	34.9
	Good	19	44.2
Location	Right colon	18	41.9
	Left colon	11	25.6
	Rectum	14	32.6
Histopathology	Mucinous	21	48.8
	Non-mucinous	22	51.2
<i>BRAF V600E</i> mutations?	Yes	6	14.0
	No	37	86.0
<i>KRAS</i> mutations?	Yes	0	0
	No	43	100

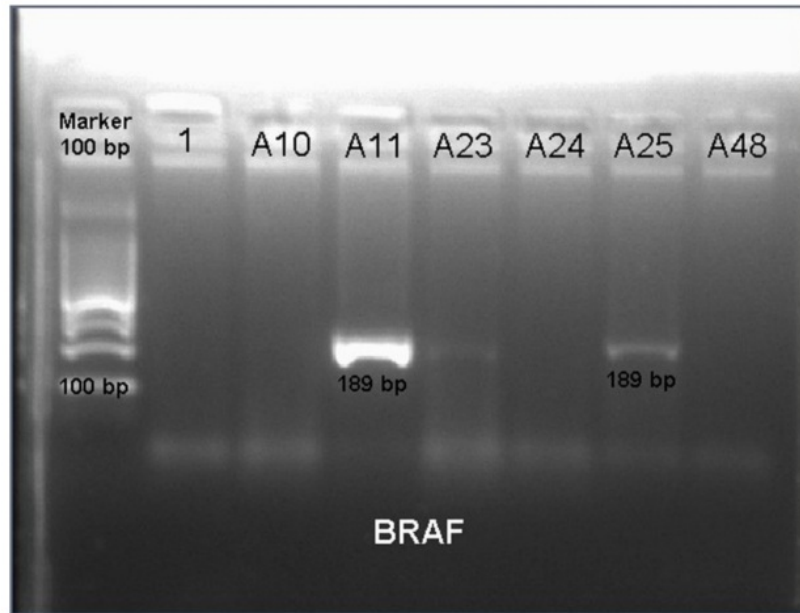


Fig. 1. Positive polymerase chain reaction in the BRAF 189-bp fragment.

Table 2
The association of BRAF V600E mutation towards gender, and age.

		BRAF V600E mutation?		Total	p*
		Yes	No		
Sex					
Male	n	1	19	20	.114
	(%)	(16.7)	(51.4)	(46.5)	
Female	n	5	18	23	
	(%)	(83.3)	(48.6)	(53.5)	
Age (years)					
<40	n	0 (0)	4 (10.8)	4 (9.3)	.075
	(%)				
40–49	n	0 (0)	6 (16.2)	6 (14.0)	
	(%)				
50–59	n	1	17	18	
	(%)	(16.7)	(45.9)	(41.9)	
60–69	n	4	6 (16.2)	10	
	(%)	(66.7)		(23.3)	
≥70	n	1	4 (10.8)	5 (11.6)	
	(%)	(16.7)			
Location					
Right colon	n	6 (100)	12	18	.008
	(%)		(32.4)		
Left colon	n	0	11	11	
	(%)		(29.7)		
Rectum	n	0	14	14	
	(%)		(37.9)		
Histopathology					
Mucinous	n	6 (100)	15	21	.009
	(%)		(40.5)	(48.8)	
Non-mucinous	n	0 (0)	22	22	
	(%)		(59.5)	(51.2)	
Degree of tumor differentiation					
Poor	n	6 (100)	13	19	.012
	(%)		(35.1)	(44.2)	
Moderate	n	0 (0)	15	15	
	(%)		(40.5)	(34.9)	
Good	n	0 (0)	9 (24.3)	9 (2.9)	
	(%)				

*Determined with the chi-square test.

that a higher percentage of BRAF V600E mutations among females (83.3%) than males (51.4%), although the difference was not significant ($p > .05$). The percentage of BRAF V600E mutations in people 60–69 years old was 66.7%. Last, despite mutations in patients less than 50 years old, the difference was not significant ($p > .05$).

4. Discussion

Because CRC involves non-specific symptoms with long-term intervals associated with the initial appearance of gland metastases [10, 11], few patients diagnosed with the disease receive curative surgery. At the same time, because CRC is believed to develop slowly via the progressive accumulation of genetic mutations, the risk of recurrence and death due to CRC is strongly associated with the disease's stage at diagnosis. Early disease detection and interventions performed at that stage can reduce the risk of death due to CRC [10–14].

Age is a dominant risk factor in CRC. As previously reported, the risk of developing CRC increases with age, especially among both men and women who are at least 50 years old, and only 3% of CRC occurs in people under the age of 40 years [15,16]. We determined a similar finding: that the most common age group to have CRC was 50- to 59-year-olds. Research has shown that CRC detected in younger patients is usually advanced and marked by acute differentiation [17]. Offering additional support, an increase in CRC toward all colonic sites in older adults was previously found in an analysis of metastasized CRC [18].

Our findings also include that BRAF V600E mutations were more common in women than men. Men were more likely to experience somatic BRAF mutations, with an effect that was stronger in smokers with tumors showing high microsatellite instability (MSI) [19]. On that topic, Lochead *et al.* (2013) found that BRAF-MSI mutations tend to affect older women and be located proximally [20]. The highest percentage of BRAF V600E mutations occurred in patients in their 70s, whereas no mutations were observed in ones less than 50 years old (Table 2). However, those differences were not significant ($p > .05$).

Our study additionally showed that gene mutation was higher in women than men, particularly regarding the site of the BRAF mutation. That finding is consistent with the results of Tsai *et al.* (2018), who demonstrated that women developed more BRAF gene mutations than

men (6.4 vs. 3.3%) ($R = 1.985, p = .006$) [21].

We also found a significant relationship between *BRAF* V600E mutations and tumor location ($p < .01$), as detailed in Table 2. A strong correlation additionally arose between *BRAF* V600E mutation and tumor location. In that light, our findings are comparable to White et al.'s (2018), which revealed that the proportion of CRC in the right colon was more common in women (27%) than men (19.5%) [22]. Kalady et al. (2012) similarly found that *BRAF* mutations were rare in the left colon, absent in the rectum, and primarily located in the proximal colon (44% vs. 95%, $p < .01$) [23]. Added to those findings, Tie et al. (2011) observed that *BRAF* mutations were common in the right colon (22%, 41/147, $p < .0001$) but rare in the left colon (4%, 7/153) and in the proximal colon (2%, 4/173) [24]. Domingo et al. (2004) reported that tumors in the proximal colon were 4.76-fold more likely to have a *BRAF* V600E mutation than ones in the distal or rectal colon [25].

The most common histopathological finding in our study was the mucinous type versus the non-mucinous type. In particular, we found a significant relationship between *BRAF* V600E mutations and histopathological features ($p < .01$) for mucinous tumors (Table 2). CRC can develop alongside several histological patterns, often distinguished by the type to which goblet cells produce and secrete mucin. Of all CRCs, the mucinous and signet ring cell types are rare (10%–20%) and associated with worse survival rates [26]. Pai et al. (2012) found that *BRAF* mutations were also high in the histological type of mucinous, serrated, poorly differentiated CRC with high MSI. They also reported that *BRAF*-microsatellite stable (MSS) mutations are similar to *BRAF*-microsatellite instable (MSI) mutation patterns in mucinous and poorly differentiated CRC [27].

Mucinous cancer differs from CRC found in 3.9%–19% of people with the disease. In particular, mucinous cancer differs from adenocarcinoma in terms of clinical and histopathological characteristics [26] and is more common in patients with colon cancer than rectal cancer (15% and 9%, respectively). A subtype of CRC more common in women than men, it also tends to be located on the proximal side of the colon. Despite such findings, the etiology of mucinous cancer remains uncertain [28].

Mutations were more common among patients with mucinous CRC than non-mucinous carcinomas. In turn, that poor prognosis relates to the histology of mucinous disease and may be partly explained by mutations in the *BRAF* gene. Those specific clinical features support the hypothesis that *BRAF*-mediated carcinogenesis in CRC commences with changes in the function of the *BRAF* gene as an initial step in the serrated pathway, which ultimately prompts *RAF*-*MEK*-*ERK*-*MAP* signaling activity [29].

We also found a significant relationship between *BRAF* V600E mutations and the degree of tumor differentiation ($p < .05$), as detailed in Table 2. Jang et al. (2017) evaluated clinicopathological characteristics of CRC in relation to *BRAF* V600E mutations a subgroup of patients with MSS or MSI. In that group, CRC with *BRAF* V600E mutations was more likely mucinous peritoneal carcinomatosis in a proximal location at an advanced pT stage and with larger tumors, a serrated component, poorly differentiated histology, and lymph vascular invasion than other types of CRC [30]. Roth et al. also concluded that *BRAF* mutations significant relate to femaleness, right colon location, older age, advanced stage of classification, tumors with high MSI, mucinous histology, high the CpG island methylator phenotype (CIMP) status, and the *MutL* homolog 1 (*MLH1*) and that such mutations prompted poor differentiation and a poor prognosis [31,32].

A limitation of our study was the limited number of patients in the sample due to time and cost constraints. Equipment for testing DNA fragments is expensive, while obtaining the results of *BRAF* V600E and/or *KRAS* mutations in the stool of CRC patients is time-consuming.

CRC with *KRAS* mutations can arise through the serrated and chromosomal instability (CIN) pathways [33,34]. Pai et al. have postulated that the *KRAS* serrated mutation pathway activates the mitogen activated protein kinase (MAPK) pathway, meaning that it causes no apoptosis, which induces serrated histomorphological features as a

result of cell proliferation. Although *KRAS* mutations have occurred in 30–50% of cases of CRC [33], we found no mutation in *KRAS*. In fact, when a correlation surfaced between CRC and expressed *KRAS* mutations, then no clinical variables were significantly related. That finding aligns with the theory articulated by Murcia et al. [35].

5. Conclusion

A significant relationship exists between *BRAF* V600E mutations in the stool of patients with CRC and the tumor location, histopathology, and degree of tumor differentiation. Our research thus shows that testing DNA fragments in stool can identify CRC.

Funding

This study was supported by funds from the Ministry of Research and Technology of the Republic of Indonesia through a research grant for novice researchers entitled “RISTEKDIKTI” Number: 641/UN4.1/KEP/2019.

Ethical Approval

All procedure for human experiment has been approved by Ethics Commission Faculty of Medicine, Hasanuddin University Number: 62/UN4.6.4.5.31/PP36/2019.

Consent

The research was conducted ethically in accordance with the World Medical Association Declaration of Helsinki. The patients have given their written informed consent on admission to use their prospective data base and files for research work.

Author contribution

WS, LY, MIK, JAB, and ES wrote the manuscript and participated in the study design. WS, WS, LY, MIK, JAB, ER, and MF drafted and revised the manuscript. WS, LY, MIK, JAB, and ER performed the patient and surgery. WS, LY, MH, and MF performed bioinformatics analyses and revised the manuscript. All authors read and approved the final manuscript.

Registration of Research Studies

This study is registered with the Research Registry and the unique identifying number is: researchregistry5926.

Guarantor

Warsinggih.

Declaration of competing interest

The authors declare that they have no conflicts of interests.

Acknowledgement

This study was supported by funds from the Ministry of Research and Technology of the Republic of Indonesia through a research grant for novice researchers entitled “RISTEKDIKTI” Number: 641/UN4.1/KEP/2019.

Appendix A. Supplementary data

Supplementary data to this article can be found online at <https://doi.org/10.1016/j.amsu.2020.10.027>.

Provenance and peer review

Not commissioned, externally peer reviewed.

References

- M.R. Abbaszadegan, Stool-based DNA testing, a new noninvasive method for colorectal cancer screening, the first report from Iran, *World J. Gastroenterol.* 13 (2007) 1528, <https://doi.org/10.3748/wjg.v13.i10.1528>.
- Warsinggih, Liliyanto, Prihantono, G.D.W. Ariani, M. Faruk, Colorectal neuroendocrine tumors: a case series, *Int. J. Surg. Case Rep.* 72 (2020) 411–417, <https://doi.org/10.1016/j.ijscr.2020.06.030>.
- F. Bray, J. Ferlay, I. Soerjomataram, R.L. Siegel, L.A. Torre, A. Jemal, A.J. Freddie Bray, Jacques Ferlay, Isabelle Soerjomataram, Rebecca L. Siegel, Lindsey A. Torre, F. Bray, J. Ferlay, I. Soerjomataram, R.L. Siegel, L.A. Torre, A. Jemal, Global cancer statistics 2018: GLOBOCAN estimates of incidence and mortality worldwide for 36 cancers in 185 countries, *CA A Cancer J. Clin.* 68 (2018) 394–424, <https://doi.org/10.3322/caac.21492>.
- H. Yang, B.-Q. Xia, B. Jiang, G. Wang, Y.-P. Yang, H. Chen, B.-S. Li, A.-G. Xu, Y.-B. Huang, X.-Y. Wang, Diagnostic value of stool dna testing for multiple markers of colorectal cancer and advanced adenoma: a meta-analysis, *Can. J. Gastroenterol.* 27 (2013) 467–475, <https://doi.org/10.1155/2013/258030>.
- S.S. Lusikooy Re, Karakteristik kanker kolorektal di Indonesia; Kajian Epidemiologi berbasis Rumah Sakit berdasarkan Data Seminar Nasional 1 Makassar Colorectal Cancer (MCC) 2011, *Maj. Ilmu Bedah Makassar*, 2013, pp. 7–11.
- X. Wang, Q. Wei, J. Gao, J. Li, J. Li, J. Gong, Y. Li, L. Shen, Clinicopathologic features and treatment efficacy of Chinese patients with BRAF-mutated metastatic colorectal cancer: a retrospective observational study, *Chin. J. Canc.* 36 (2017) 81, <https://doi.org/10.1186/s40880-017-0247-y>.
- A. Cercek, M.I. Braghieri, J.F. Chou, J.F. Hechtman, N. Kemeny, L. Saltz, M. Capanu, R. Yaeger, Clinical features and outcomes of patients with colorectal cancers harboring NRAS mutations, *Clin. Canc. Res.* 23 (2017) 4753–4760, <https://doi.org/10.1158/1078-0432.CCR-17-0400>.
- M. Westwood, T. van Asselt, B. Ramaekers, P. Whiting, M. Joore, N. Armstrong, C. Noake, J. Ross, J. Severens, J. Kleijnen, KRAS mutation testing of tumours in adults with metastatic colorectal cancer: a systematic review and cost-effectiveness analysis, *Health Technol. Assess. (Rockv.)* 18 (2014) 1–132, <https://doi.org/10.3310/hta18620>.
- R.A. Agha, M.R. Borrelli, M. Vella-Baldacchino, R. Thavayogan, D.P. Orgill, D. Pagano, P.S. Pai, S. Basu, J. McCaul, F. Millham, B. Vasudevan, C.R. Leles, R. D. Rosin, R. Klappenbach, D.A. Machado-Aranda, B. Perakath, A.J. Beamish, M. A. Thorat, M.H. Ather, N. Farooq, D.M. Laskin, K. Raveendran, J. Albrecht, J. Milburn, D. Miguel, I. Mukherjee, M. Valmasoni, J. Ngu, B. Kirshtein, N. Raison, M. Boscoe, M.J. Johnston, J. Hoffman, M. Bashashati, A. Thoma, D. Healy, D. P. Orgill, S. Giordano, O.J. Muensterer, H. Kadioglu, A. Alsawadi, P.J. Bradley, I. J. Nixon, S. Massarut, B. Challacombe, A. Noureldin, M. Chalkoo, R.Y. Afifi, R. A. Agha, J.K. Aronson, T.E. Pidgeon, The STROCSS statement: strengthening the reporting of Cohort studies in surgery, *Int. J. Surg.* 46 (2017) 198–202, <https://doi.org/10.1016/j.ijisu.2017.08.586>.
- Y. Rossez, C. Burtua, S. Laurent, P. Gosset, R. Leonard, W. Gonzales, Early detection of colonic dysplasia by magnetic resonance molecular imaging with contrast agent raised against the colon cancer marker MUC5AC, *Contrast Media Mol. Imaging* 11 (2016) 211–221.
- J. Rho, J. Ladd, C. Li, J. Potter, Y. Zhang, D. Shelley, Protein and Glycomic Plasma Markers for Early Detection of Adenoma and Colon Cancer, 2016.
- M. Hollis, K. Nair, A. Vyas, L.S. Chaturvedi, S. Gambhir, D. Vyas, MicroRNAs potential utility in colon cancer: early detection, prognosis, and chemosensitivity, *World J. Gastroenterol.* 21 (2015) 8284–8292, <https://doi.org/10.3748/wjg.v21.i27.8284>.
- N. Fukuhara, Y. Tanino, S. Sato, A. Fukuhara, M. Uematsu, T. Nikaïdo, Early detection of colon cancer by increased serum level of Krebs von den lungen-6 in a patient with dermatomyositis-assiated interstitial pneumonia, *Sarcoidosis Vasc. Diffuse Lung Dis.* 16 (2015) 753–756.
- S. Ay, M. Eryilmaz, N. Aksoy, A. Okus, Y. Unlu, B. Sevinc, Is early detection of colon cancer possible with red blood cell distribution with? *Asian Pac. J. Cancer Prev. APJCP* 16 (2015) 753–756.
- P. Kocián, A. Whitley, M. Blaha, J. Hoch, Colorectal cancer in patients under the age of 40 years: experience from a tertiary care centre in the Czech Republic, *Acta Chir. Belg.* 117 (2017) 356–362, <https://doi.org/10.1080/00015458.2017.1321270>.
- H. Kobayashi, H. Ishida, H. Ueno, T. Hinoi, Y. Inoue, F. Ishida, Y. Kanemitsu, T. Konishi, T. Yamaguchi, N. Tomita, N. Matsubara, T. Watanabe, K. Sugihara, Association between the age and the development of colorectal cancer in patients with familial adenomatous polyposis: a multi-institutional study, *Surg. Today* 47 (2017) 470–475, <https://doi.org/10.1007/s00595-016-1398-1>.
- M.L. Slattery, T.R. Levin, K. Ma, D. Goldgar, R. Holubkov, S. Edwards, Family history and colorectal cancer: predictors of risk, *Cancer Causes Control* 14 (2003) 879–887, <https://doi.org/10.1023/B:CACO.0000003840.94591.76>.
- G.S. Cooper, Z. Yuan, C.S. Landefeld, J.F. Johanson, A.A. Rimm, A national population-based study of incidence of colorectal cancer and age. Implications for screening in older Americans, *Cancer* 75 (1995) 775–781, [https://doi.org/10.1002/1097-0142\(19950201\)75:3<775::aid-cnrc2820750305>3.0.co;2-d](https://doi.org/10.1002/1097-0142(19950201)75:3<775::aid-cnrc2820750305>3.0.co;2-d).
- L.S. Rozek, C.M. Herron, J.K. Greenon, V. Moreno, G. Capella, G. Rennert, S. B. Gruber, Smoking, gender, and ethnicity predict somatic BRAF mutations in colorectal cancer, *Canc. Epidemiol. Biomarkers Prev.* 19 (2010) 838–843, <https://doi.org/10.1158/1055-9965.EPI-09-1112>.
- P. Lochhead, A. Kuchiba, Y. Imamura, X. Liao, M. Yamauchi, R. Nishihara, Z. R. Qian, T. Morikawa, J. Shen, J.A. Meyerhardt, C.S. Fuchs, S. Ogino, Microsatellite instability and BRAF mutation testing in colorectal cancer prognostication, *J. Natl. Cancer Inst.* 105 (2013) 1151–1156, <https://doi.org/10.1093/jnci/djt173>.
- Y.-J. Tsai, S.-C. Huang, H.-H. Lin, C.-C. Lin, Y.-T. Lan, H.-S. Wang, S.-H. Yang, J.-K. Jiang, W.-S. Chen, T. Lin, J.-K. Lin, S.-C. Chang, Differences in gene mutations according to gender among patients with colorectal cancer, *World J. Surg. Oncol.* 16 (2018), <https://doi.org/10.1186/s12957-018-1431-5>.
- A. White, L. Ironmonger, R.J.C. Steele, N. Ormiston-Smith, C. Crawford, A. Seims, A review of sex-related differences in colorectal cancer incidence, screening uptake, routes to diagnosis, cancer stage and survival in the UK, *BMC Canc.* 18 (2018) 906, <https://doi.org/10.1186/s12885-018-4786-7>.
- M.F. Kalady, K.L. DeJulius, J.A. Sanchez, A. Jarrar, X. Liu, E. Manilich, M. Skacel, J. M. Church, BRAF mutations in colorectal cancer are associated with distinct clinical characteristics and worse prognosis, *Dis. Colon Rectum* 55 (2012) 128–133, <https://doi.org/10.1097/DCR.0b013e31823c08b3>.
- J. Tie, P. Gibbs, L. Lipton, M. Christie, R.N. Jorissen, A.W. Burgess, M. Croxford, I. Jones, R. Langland, S. Kosmider, D. McKay, G. Bollag, K. Nolop, O.M. Sieber, J. Desai, Optimizing targeted therapeutic development: analysis of a colorectal cancer patient population with the BRAF(V600E) mutation, *Int. J. Canc.* 128 (2011) 2075–2084, <https://doi.org/10.1002/ijc.25555>.
- E. Domingo, E. Espin, M. Armengol, C. Oliveira, M. Pinto, A. Duval, C. Brennetot, R. Seruca, R. Hamelin, H. Yamamoto, S.J. Schwartz, Activated BRAF targets proximal colon tumors with mismatch repair deficiency and MLH1 inactivation, *Gene Chromosome Canc.* 39 (2004) 138–142, <https://doi.org/10.1002/gcc.10310>.
- J.S. Park, J.W. Huh, Y.A. Park, Y.B. Cho, S.H. Yun, H.C. Kim, W.Y. Lee, H.-K. Chun, Prognostic comparison between mucinous and nonmucinous adenocarcinoma in colorectal cancer, *Medicine (Baltim.)* 94 (2015), <https://doi.org/10.1097/MD.0000000000000658> e658–e658.
- R.K. Pai, P. Jayachandran, A.C. Koong, D.T. Chang, S. Kwok, L. Ma, D.A. Arber, R. R. Balise, R.R. Tubbs, B. Shadrach, R.K. Pai, BRAF-mutated, microsatellite-stable adenocarcinoma of the proximal colon: an aggressive adenocarcinoma with poor survival, mucinous differentiation, and adverse morphologic features, *Am. J. Surg. Pathol.* 36 (2012) 744–752, <https://doi.org/10.1097/PAS.0b013e31824430d7>.
- M. Payandeh, M. Sadeghi, E. Sadeghi, Mucinous and non-mucinous adenocarcinoma in colorectal cancer patients TT -, *IJBC* 8 (2016) 75–79. <http://ijbc.ir/article-1-654-en.html>.
- T. Yokota, T. Ura, N. Shibata, D. Takahari, K. Shitara, M. Nomura, C. Kondo, A. Mizota, S. Utsunomiya, K. Muro, Y. Yatabe, BRAF mutation is a powerful prognostic factor in advanced and recurrent colorectal cancer, *Br. J. Canc.* 104 (2011) 856–862, <https://doi.org/10.1038/bjc.2011.19>.
- M.H. Jang, S. Kim, D.Y. Hwang, W.Y. Kim, S.D. Lim, W.S. Kim, T.S. Hwang, H. S. Han, BRAF-mutated colorectal cancer exhibits distinct clinicopathological features from wild-type BRAF-expressing cancer independent of the microsatellite instability status, *J. Kor. Med. Sci.* 32 (2017) 38–46, <https://doi.org/10.3346/jkms.2017.32.1.38>.
- M. Sideris, K. Adams, J. Moorhead, S. Diaz-Cano, I. Bjarnason, S. Papagrigoriadis, BRAF V600E mutation in colorectal cancer is associated with right-sided tumours and iron deficiency anaemia, *Anticancer Res.* 35 (2015) 2345–2350.
- A.D. Roth, S. Tejpar, M. Delorenzi, P. Yan, R. Fiocca, D. Klingbiel, D. Dietrich, B. Biesmans, G. Bodoky, C. Barone, E. Aranda, B. Nordlinger, L. Cisar, R. Labianca, D. Cunningham, E. Van Cutsem, F. Bosman, Prognostic role of KRAS and BRAF in stage II and III resected colon cancer: results of the translational study on the PETACC-3, EORTC 40993, SAKK 60-00 trial, *J. Clin. Oncol.* 28 (2010) 466–474, <https://doi.org/10.1200/JCO.2009.23.3452>.
- A. V Patai, B. Molnár, Z. Tulassay, F. Sipos, Serrated pathway: alternative route to colorectal cancer, *World J. Gastroenterol.* 19 (2013) 607–615, <https://doi.org/10.3748/wjg.v19.i5.607>.
- J. García-Solano, P. Conesa-Zamora, P. Carbonell, J. Trujillo-Santos, D. Torres-Moreno, D.I. Pagán-Gómez, E. Rodríguez-Braun, M. Pérez-Guillermo, Colorectal serrated adenocarcinoma shows a different profile of oncogene mutations, MSI status and DNA repair protein expression compared to conventional and sporadic MSI-H carcinomas, *Int. J. Canc.* 131 (2012) 1790–1799, <https://doi.org/10.1002/ijc.27454>.
- O. Murcia, M. Juárez, E. Hernández-Illán, C. Egoavil, M. Giner-Calabuig, M. Rodríguez-Soler, R. Jover, Serrated colorectal cancer: molecular classification, prognosis, and response to chemotherapy, *World J. Gastroenterol.* 22 (2016) 3516, <https://doi.org/10.3748/wjg.v22.i13.3516>.

Relationship between BRAF V600E and KRAS mutations in stool for identifying colorectal cancer: A cross-sectional study

ORIGINALITY REPORT

% **21**

SIMILARITY INDEX

% **14**

INTERNET SOURCES

% **16**

PUBLICATIONS

% **5**

STUDENT PAPERS

PRIMARY SOURCES

1 Submitted to University of Nebraska at Omaha % **2**
Student Paper

2 Submitted to Western Governors University % **1**
Student Paper

3 Hye-Jung Kim, Myeong-Hee Yu, Ho-Guen Kim, Jong-Hoe Byun, Cheolju Lee. "Noninvasive molecular biomarkers for the detection of colorectal cancer", BMB Reports, 2008 % **1**
Publication

4 www.hindawi.com % **1**
Internet Source

5 www.panafrican-med-journal.com % **1**
Internet Source

6 link.springer.com % **1**
Internet Source

7 journals.plos.org % **1**
Internet Source

Abbaszadegan, Mohammad Reza. "Stool-based

8

DNA testing, a new noninvasive method for colorectal cancer screening, the first report from Iran", World Journal of Gastroenterology, 2007.

Publication

% 1

9

Jenny N. Poynter. "BRAF and NRAS mutations in melanoma and melanocytic nevi", Melanoma Research, 08/2006

Publication

% 1

10

www.esmo.org

Internet Source

% 1

11

spandidos-publications.com

Internet Source

% 1

12

Myung Jin Ban, Jae Yeup Jung, Jae Wook Kim, Ki Nam Park, Seung Won Lee, Yoon Woo Koh, Jae Hong Park. "A clinical prediction score to determine surgical drainage of deep neck infection: A retrospective case-control study", International Journal of Surgery, 2018

Publication

% 1

13

www.nature.com

Internet Source

% 1

14

kclpure.kcl.ac.uk

Internet Source

<% 1

15

bmccancer.biomedcentral.com

Internet Source

<% 1

16

G.C. Kirby, C.A.W. Macano, S.M. Nyasavajjala, M. Sahloul, M. Daskalakis, M. Richardson, R. Singhal. "The Birmingham experience of high-pressure methylene blue dye test during primary and revisional bariatric surgery: A retrospective cohort study", *Annals of Medicine and Surgery*, 2017

Publication

<% 1

17

Matthew F. Kalady. "BRAF Mutations in Colorectal Cancer Are Associated With Distinct Clinical Characteristics and Worse Prognosis :", *Diseases of the Colon & Rectum*, 02/2012

Publication

<% 1

18

repository.tudelft.nl

Internet Source

<% 1

19

biotechnologyforbiofuels.biomedcentral.com

Internet Source

<% 1

20

www.hematologyandoncology.net

Internet Source

<% 1

21

Anwar Hussain, Fahad Mahmood, Andrew W. Torrance, Achilleas Tsiamis. "Impact of medial-to-lateral vs lateral-to-medial approach on short-term and cancer-related outcomes in laparoscopic colorectal surgery: A retrospective cohort study", *Annals of Medicine and Surgery*, 2018

Publication

<% 1

22 cyberleninka.org Internet Source <% 1

23 jcancer.org Internet Source <% 1

24 K. Togashi. "The Use of Acetic Acid in Magnification Chromocolonoscopy for Pit Pattern Analysis of Small Polyps", Endoscopy, 06/2006
Publication <% 1

25 www.oncotarget.com Internet Source <% 1

26 Moxin Wu, Yong Sung Kim, Han-Seung Ryu, Suck Chei Choi et al. "MSI status is associated with distinct clinicopathological features in BRAF mutation colorectal cancer: A systematic review and meta-analysis", Pathology - Research and Practice, 2020
Publication <% 1

27 onlinelibrary.wiley.com Internet Source <% 1

28 www.jove.com Internet Source <% 1

29 pure.uva.nl Internet Source <% 1

Erling Dahl Borkamo, Olav Dahl, Ove Bruland,

30

Øystein Fluge. "Global gene expression analyses reveal changes in biological processes after hyperthermia in a rat glioma model", International Journal of Hyperthermia, 2009

Publication

<% 1

31

jkms.org

Internet Source

<% 1

32

Cong Luo, Shuyi Cen, Guojun Ding, Wei Wu. "Mucinous colorectal adenocarcinoma: clinical pathology and treatment options", Cancer Communications, 2019

Publication

<% 1

33

carcin.oxfordjournals.org

Internet Source

<% 1

34

Mark Ewalt, Subhadra Nandula, Adrienne Phillips, Bachir Alobeid, Vundavalli V. Murty, Mahesh M. Mansukhani, Govind Bhagat. "Real-time PCR-based analysis of BRAF V600E mutation in low and intermediate grade lymphomas confirms frequent occurrence in hairy cell leukaemia", Hematological Oncology, 2012

Publication

<% 1

35

clonerresources.com

Internet Source

<% 1

36

www.tandfonline.com

Internet Source

<% 1

37

Jeanne Tie. "Optimizing targeted therapeutic development: Analysis of a colorectal cancer patient population with the BRAFV600E mutation", International Journal of Cancer, 2010

Publication

<% 1

38

Tadao Tomita, Miyuki Takayanagi, Kimie Kiwada, Akemi Mieda, Chiyoko Takahashi, Tadayoshi Hata. "Vasovagal reactions in apheresis donors", Transfusion, 2002

Publication

<% 1

39

discovery.ucl.ac.uk

Internet Source

<% 1

40

Taher Reza Kermanshahi, Deepa Magge, Haroon Choudry, Leksmi Ramalingam et al. "Mucinous and Signet Ring Cell Differentiation Affect Patterns of Metastasis in Colorectal Carcinoma and Influence Survival", International Journal of Surgical Pathology, 2016

Publication

<% 1

41

cronfa.swan.ac.uk

Internet Source

<% 1

42

Shaham Beg, Abdul K. Siraj, Sarita Prabhakaran, Rong Bu et al. "Molecular markers and pathway analysis of colorectal carcinoma in the Middle East", Cancer, 2015

Publication

<% 1

43 Frank A. Sinicrope, Michelle R. Mahoney, Thomas C. Smyrk, Stephen N. Thibodeau et al. "Prognostic Impact of Deficient DNA Mismatch Repair in Patients With Stage III Colon Cancer From a Randomized Trial of FOLFOX-Based Adjuvant Chemotherapy", Journal of Clinical Oncology, 2013
Publication

44 tessera.spandidos-publications.com
Internet Source

45 www.wjgnet.com
Internet Source

46 Chen, Dong, Jun-Fu Huang, Kai Liu, Li-Qun Zhang, Zhao Yang, Zheng-Ran Chuai, Yun-Xia Wang, Da-Chuan Shi, Qing Huang, and Wei-Ling Fu. "BRAFV600E Mutation and Its Association with Clinicopathological Features of Colorectal Cancer: A Systematic Review and Meta-Analysis", PLoS ONE, 2014.
Publication

47 T Yokota. "BRAF mutation is a powerful prognostic factor in advanced and recurrent colorectal cancer", British Journal of Cancer, 03/01/2011
Publication

48 Jianhua Wang, Jiajia Shen, Chi Huang, Meng

Cao, Lizong Shen. " Clinicopathological Significance of Mutation in Colorectal Cancer: An Updated Meta-Analysis ", Journal of Cancer, 2019

Publication

EXCLUDE QUOTES ON

EXCLUDE ON
BIBLIOGRAPHY

EXCLUDE MATCHES < 5
WORDS